

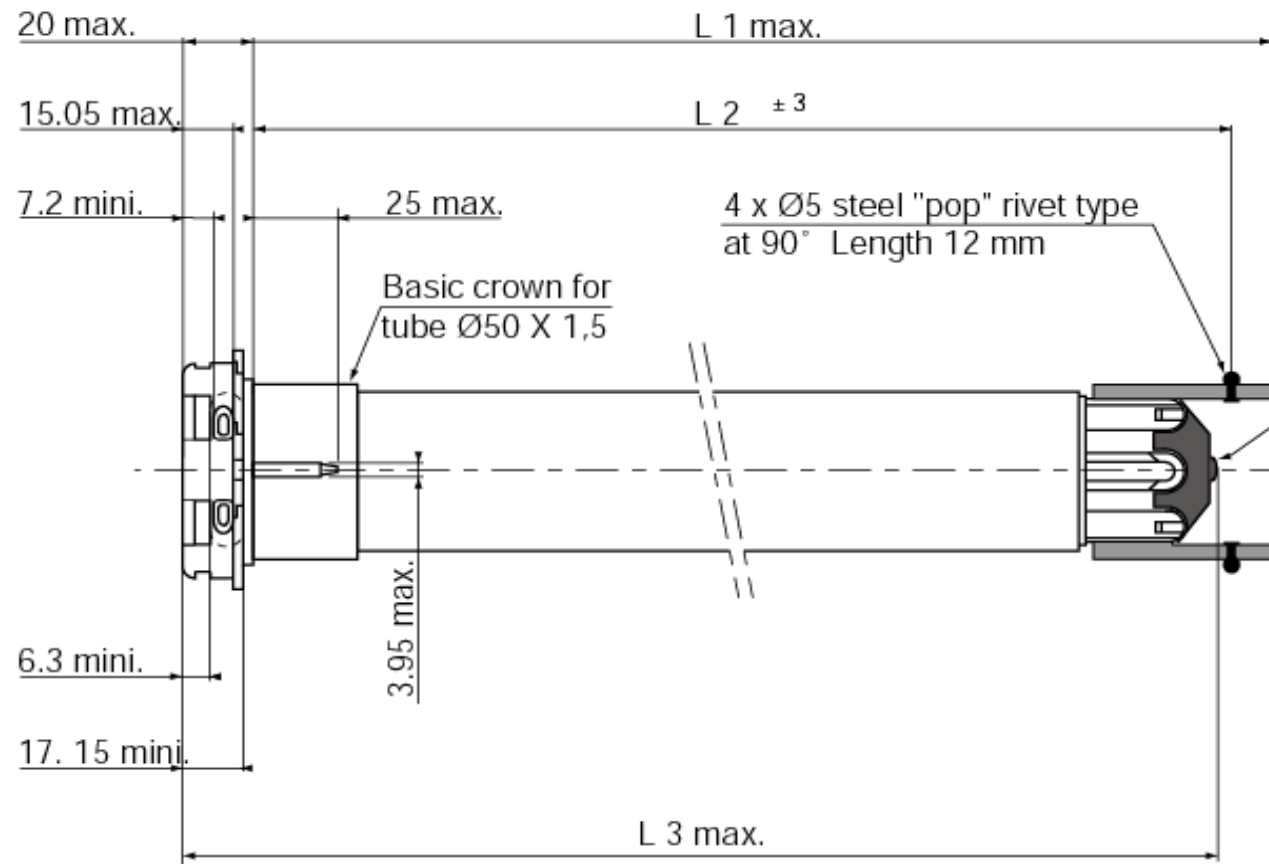
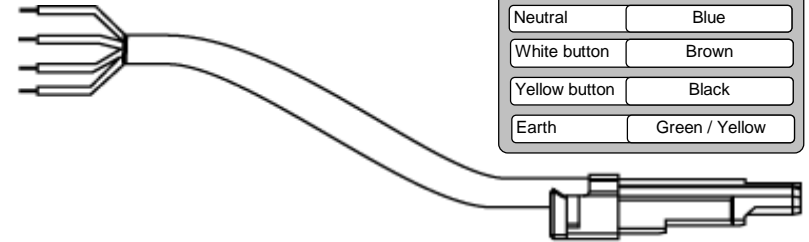
| | |
|-----------------------------------|--|
| Nominal voltage | 220 V - 60 Hz |
| Power supply tolerances | 206.4 - 226.8 V |
| Thermal time | 2.25 minutes |
| Number of wires of the cable | 4 |
| Wire section | 0.75 mm ² |
| Type of Limit Switch Unit | Quick limit switch |
| Capacity of the Limit Switch Unit | 46 turns |
| Repeatability | ± 5° |
| System of protection | IP 31 |
| Interface drawings | 206810 : Screw Implantation LT50 206817 : Buttons LT50 206821 : Wheel Interface LT50 206822 : Crown Interface LT50 206823 : Star Head LT50, LT50 PA/PS |
| Basic crown for tube Ø | 50 x 1.5 mm + see integration recommendations |
| Temperature working range | Normal use : 0°C to + 60°C |
| Noise Level | According to SOMFY mesures (Pressure level measured at 1m from the end product). |

| Integration recommendations | |
|-----------------------------|--|
| | <ul style="list-style-type: none"> * The noise level depends upon the right fit between customers tubes and accessories, especially the crowns * Plays have to be minimized between the accessories and the end product tube for silent result * Interior tube diameter > 47 mm - compatible with LT50 range crowns and wheels - * Crown as an interface with tubes is compulsory for silent result * Drive wheel must be screwed with stop wheel ref : 9910004 * Drive wheel must be popped to the tube * Specific collapsable idler end cap ref : 9013592 for silent result (do not use current LT50 idler end caps) |

| Tests done at 20°C, 230V 50Hz, in a tube of Ø63 | | | | | | | | | | | | | | | |
|---|----------------|---------------|-----------|---------|------------|---------|------|-------------|---------------|------------------|------------|--------|-------|--------|-----------|
| | Nm | rpm | | mm | mm | mm | mm | W | A | °C | | kg | dBA | mm | µF |
| Designation | Nominal torque | No-load Speed | reference | L1 max. | L2 (±3 mm) | L3 max. | tube | Rated power | Rated current | Thermal tripping | Brake type | Weight | Noise | Stator | Capacitor |
| 503S6 SONESSE | 3 | 28 | 1030092 | 719.5 | 711.5 | 723.5 | 650 | 90 | 0,4 | 120 | sliding | 2.52 | ≤44 | 60 | 2.5 |

WIRING

| | |
|---------------|----------------|
| Neutral | Blue |
| White button | Brown |
| Yellow button | Black |
| Earth | Green / Yellow |



Stop wheel

